

Application Note



2500 Series® Programmable Automation Control System

Setting up S7-1500 as a Profibus Slave to CTI 2500 Series® Processors

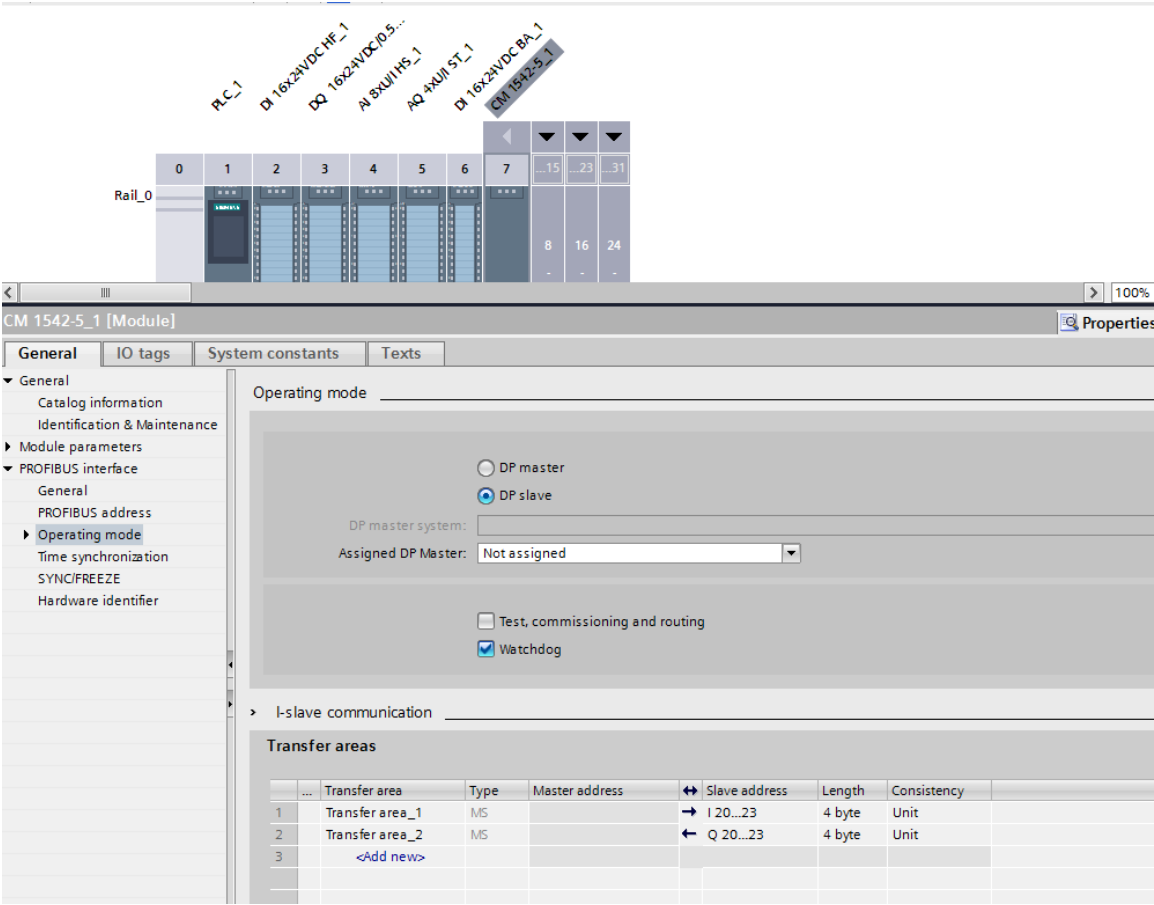
CTI 2500-C200, C300, and C400 Processors include an on-board Profibus-DP Master port. In addition to connecting remote I/O bases, this port allows connection of any Profibus-DP slave to the CTI processor. This application note shows how connect an S7-1500 CPU from Siemens® as a Profibus Slave.



ROCK SOLID PERFORMANCE. TIMELESS COMPATIBILITY.

Setting up S71500 as Slave

In Step 7 Portal configure CM1542-5 card as a slave
Add the transfer area for the inputs and outputs



Add the GSD file into Workshop and configure the output and input modules to mirror and match the Step 7 Portal configuration

